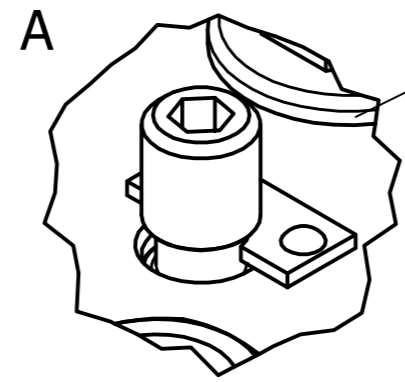
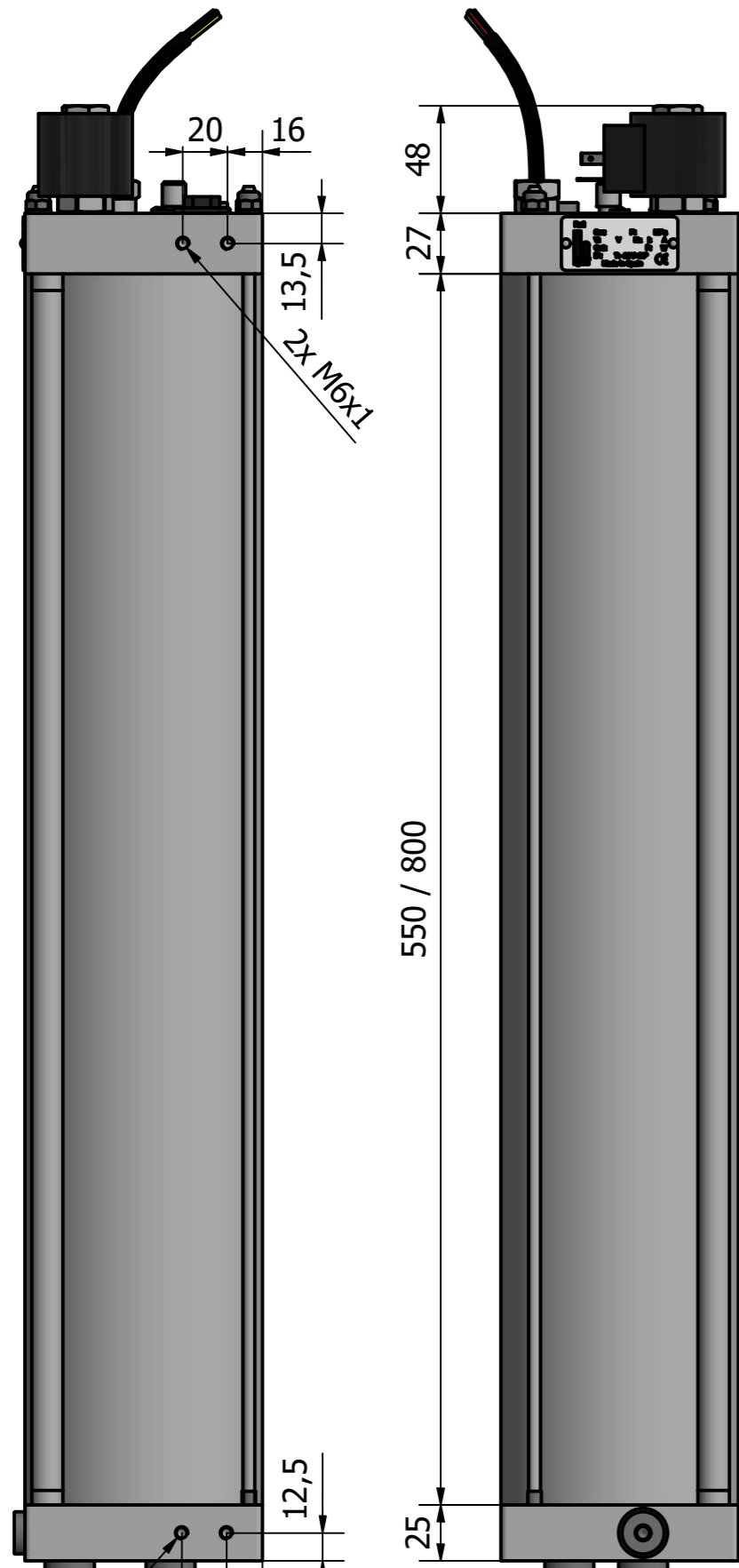


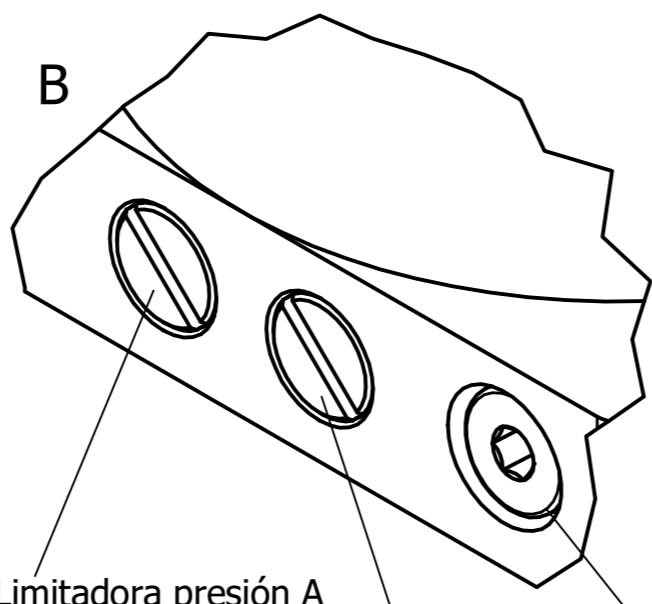
| Rugosidades Estandar NR-08-016 |      |          |          |          |      |      |      |      |      |      | Tolerancias Generales Mecanizado (NR-08-009) |                      |                                     |                      |                                     |
|--------------------------------|------|----------|----------|----------|------|------|------|------|------|------|--|----------------------|-------------------------------------|----------------------|-------------------------------------|
| Clase de Rugosidad             | C1.5 | C4       | C8       | C16      | C24  | C32  | C50  | C63  | C100 | C120 | C250   | Dimensiones Lineales | Modulos y Tolerancias Lineales (mm) | Dimensiones Lineales | Modulos y Tolerancias Lineales (mm) |
| Ra (µm)                        | 0.04 | 0.1      | 0.05-0.2 | 0.05-0.4 | 0.6  | 0.8  | 1.25 | 1.6  | 2.5  | 3    | 6.5  | 3 - 6                | ±0.1                                | 120 - 400            | ±0.5                                |
| Rz DIN                         | 1.6  | 0.63-1.6 | 0.63-2.5 | 6.3      | 10   | 10   | 10   | 10   | 10   | 10   | 10   | 6 - 30               | ±0.1                                | 400 - 1000           | ±0.8                                |
| Rt (µm)                        | 2.5  | 4        | 4        | 10       | 12.5 | 12.5 | 12.5 | 12.5 | 12.5 | 12.5 | 12.5   | 6 - 30               | ±0.2                                | 1000 - 2000          | ±1.2                                |
| tp %                           | ---  | ---      | 50-70    | 50-70    | ---  | ---  | ---  | ---  | ---  | ---  | ---  | 30 - 120             | ±0.3                                | 2000 - 4000          | ±2                                  |

Toma presión B. BSP 3/8G  
Pressure port B. BSP 3/8G  
Raccord pressure B. BSP 3/8G

Toma presión A. BSP 3/8G  
Pressure port A. BSP 3/8G  
Raccord pressure A. BSP 3/8G

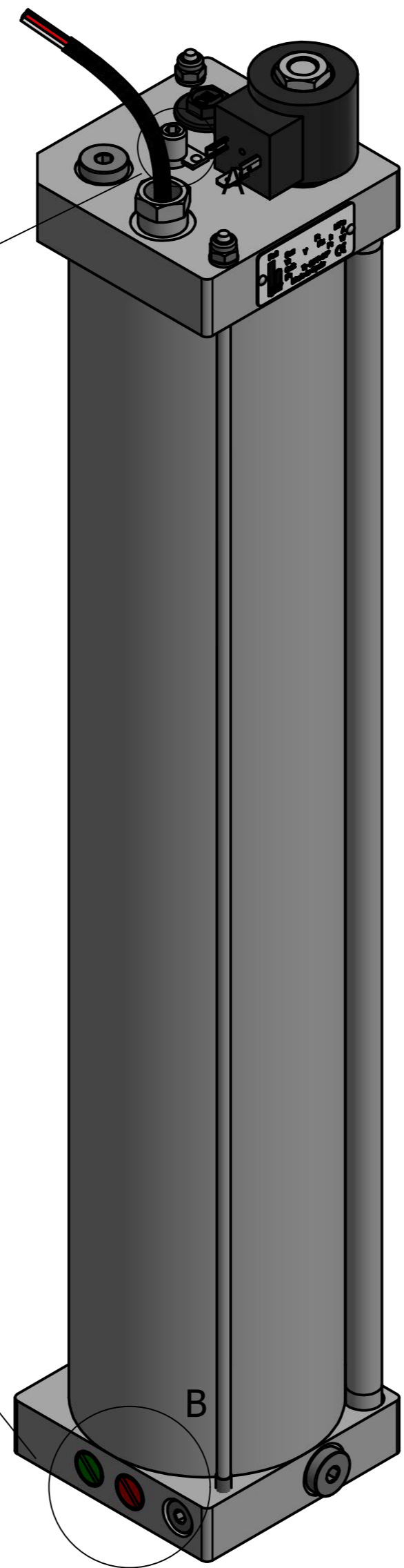


Desbloqueo manual. Hex.5mm  
Manual by-pass. Hex.5mm  
Déverrouillage manuel. Hex.5mm



Limitadora presión A  
Relief valve A  
Régulateur pression A

Limitadora presión B  
Relief valve B  
Régulateur pression B



**DATOS TECNICOS - TECHNICAL DATA - DONNÉES TECHNIQUES**

|  |  |
|--|--|
| Presión taraje limitadora<br>Setting pressure<br>Pression de réglage   | 4.5 MPa  |
| Desplazamiento volumétrico<br>Volumetric displacement<br>Déplacement volumétrique                              | 5.00 cm³/rev                                       |
| Caudal<br>Flow<br>Cébit  | 15 L/min   |
| Motor eléctrico<br>Electric motor<br>Moteur électrique   | 1300W 400V 50Hz 3000rpm                            |
| Longitud del deposito / Capacidad Aceite<br>Tank length / Oil capacity<br>Longueur de dépôt / Capacité d'huile | 500mm / aprox. 3020cm³<br>800mm / aprox. 4970cm³   |
| Aceite recomendado<br>Oil to be used<br>Huile recommandé   | Hydoil   |
| Gama de temperaturas del fluido<br>Fluid temperature range<br>Plage de température du fluide                   | -20~C...+80~C.                                     |
| Grado de protección IP<br>IP rating<br>Protection IP   | IP-67  |
| Válvula eléctrica<br>Electrical valve<br>Valve électrique  | N.O. 24VDC 20W<br>N.C. 24VDC 20W                   |
| Conector válvula eléctrica<br>Electrical valve connector<br>Connecteur de valve électrique                     | DIN-43650  |
| Presostato<br>Switch pressure<br>Interrupteur de pression  | No (Optional)                                      |
| Pintura<br>Paint<br>Peinture   | RAL 9006<br>GRIS PLATA / GREY SILVER / GRIS ARGENT |

| SIGN | DATE | DATE | NOTE MODIFICATION | SYM | ALTERATION | SIGN |
|------|------|------|-------------------|-----|------------|------|
|      |      |      |                   |     |            |      |

CUSTOMER APPROVED     APPROVED WITH CORRECTION    DATE . . .

DRAWN BY: **Ramon Font**    DATE: **201023**    APPROVED BY: .    DATE: .

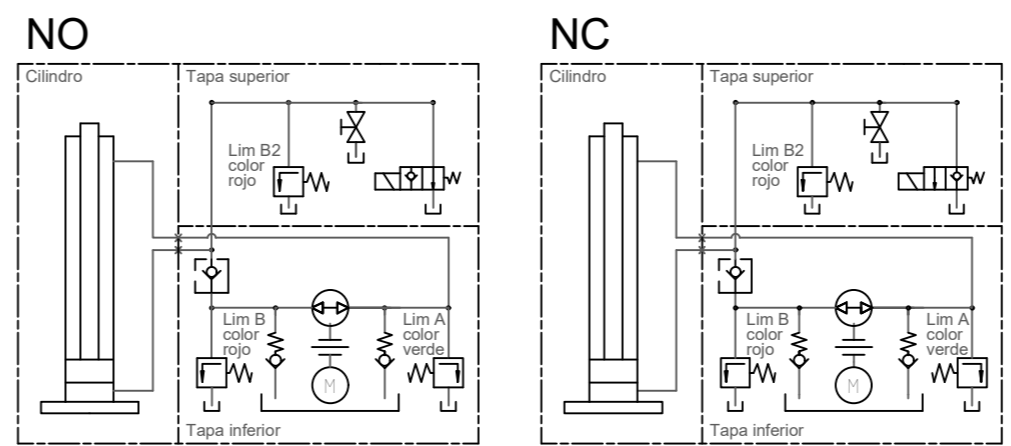
CUSTOMER REFERENCE:    REVISION: .

CUSTOMER NAME:    HYDOM DRAWING NAME: **ESQUEMA MEDIDAS Y FUNCIONAMIENTO**

HYDOM REFERENCE: **1UAM500B\_\_N\_24S45**    DATE: **201023**

**hydom**    GRUPO HIDRA. PILONA    CODE: .    REVISION: **00**  
Hidro-domèstics,SL, Tel, +34 93 322 56 61  
Pol. les Goules C/fusteria 26 08551 TONA (Bcn)

**ESQUEMA HIDRÁULICO  
HYDRAULIC SCHEME  
SCHÉMA HYDRAULIQUE**



Quitar todas las aristas vivas con chafián de 0,2-0,3 a 45° ó radio, si no hay indicación contraria.